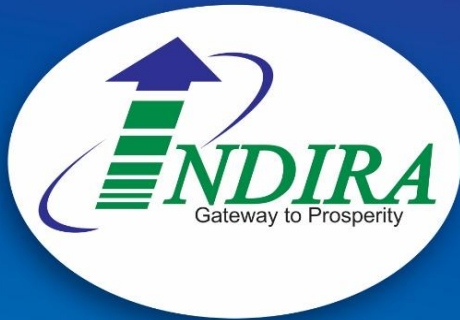


www.indiratrade.com



MONDAY

CURRENCY COMMODITIES

WEEKLY REPORT

16 DEC 2019 TO 20 DEC 2019

EDGE



INDIRA SECURITIES PVT. LTD.



WEEKLY INDICES CHANGES

INDEX	CLOSE	PREV. CLOSE	Change (%)
SENSEX	41009.71	40793.81	0.53%
NIFTY	12,086.70	12,056.00	0.25%
MIDCAP	14830.4	15084.86	-1.69%
DOW	28135.4	28051.4	0.30%
NASDAQ	8734.88	8,665.47	0.80%
FTSE	7353.44	7,346.53	0.09%
NIKKEI	24023.1	23,293.90	3.13%
HANGSENG	27687.8	26,346.50	5.09%

Market Round Up:

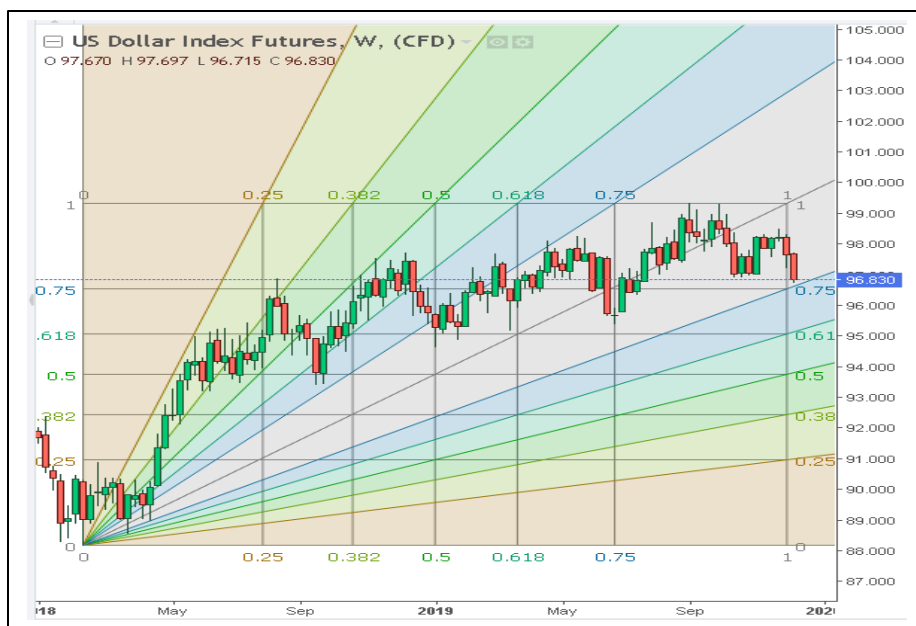
- **Trump Denies WSJ Trade Deal Story as China Prepares News Conference:** - President Donald Trump denied a Wall Street Journal story claiming that he had signed off on a deal to postpone further tariffs on Chinese imports and cut some existing ones in returns for guaranteed volumes of U.S. farm goods purchases.
- **Bank of Russia Delivers Fifth Rate Cut as Inflation Plunges:** - The Bank of Russia delivered a fifth consecutive bout of monetary easing, cutting the key rate by 25 basis points as the inflation rate continued to fall below target.
- **The bank lowered its benchmark interest rate to 6.25%,** according to a statement published on Friday, taking the total reduction this year to 150 basis points. The move was forecast by 26 out of 33 economists in a Bloomberg survey. Four had predicted a hold and three expected a deeper move.
- **Pound Jumps More Than 2% on Election Prediction;** Yuan Surge on Trade News: - The British pound jumps more than 2% against the U.S. dollar after a U.K. election exit poll suggested that Boris Johnson's Conservative Party is projected to win the election.
- **The GBP/USD pair jumped 2.3% by 11:15 PM ET (03:15 GMT).**
- **Meanwhile, the AUD/USD pair and the NZD/USD pair both climbed 0.3%.**

RBI REFRANCE RATE

INDEX	CLOSE	PREV. CLOSE
USDINR	70.7178	71.3700
EURINR	78.9748	79.2575
JPYINR	64.5300	65.8175
GBPINR	95.2767	93.7525



DOLLAR INDEX CHART



US Dollar Index	
RSI(14)	SELL
STOCH(9,6)	SELL
STOCHRSI(14)	SELL
MACD(12,26)	SELL
ADX(14)	SELL
Williams %R	SELL
CCI(14)	SELL
Highs/Lows(14)	BUY
Ultimate Oscillator	SELL
ROC	SELL
BUY	1
SELL	9
NEUTRAL	0
SUMMARY	STRONG BEARISH

USDINR TECHNICAL CHART (INDIAN RUPEE)



USDINR.Rolling	
RSI(14)	SELL
STOCH(9,6)	SELL
STOCHRSI(14)	SELL
MACD(12,26)	SELL
ADX(14)	SELL
Williams %R	NETURAL
CCI(14)	SELL
Highs/Lows(14)	0
Ultimate Oscillator	BUY
ROC	SELL
BUY	1
SELL	8
NEUTRAL	1
SUMMARY	STRONG BEARISH



DOMESTIC CURRENCY

Domestic	S2	S1	PIVOT	R1	R2
USDINR	70.87	71.12	71.56	71.81	72.25
EURINR	78.77	79.02	79.4	79.64	80.03
GBPINR	91.96	92.86	93.52	94.41	95.07
JPYINR	65.11	65.46	65.94	66.3	66.78

GLOBAL CURRENCY

Global	S2	S1	PIVOT	R1	R2
DOLLAR INDEX	96.78	97.22	97.8	98.24	98.82
EURUSD	1.1	1.1	1.11	1.11	1.12
GBPUSD	1.28	1.3	1.31	1.32	1.33
USDJPY	107.76	108.26	108.86	109.36	109.96

CURRENCY	CLOSE PRICE	DAY	WEEK	MONTHLY	YEARLY
EURO	1.10197	-0.0041	-0.003	-0.0098	-0.0282
POUND	1.2822	-0.0074	-0.0062	-0.0073	0.0008
AUSTRALIAN DOLLAR	0.6786	-0.0003	-0.0047	-0.0098	-0.0619
NEWZEALAND DOLLAR	0.6397	-0.0011	-0.0005	-0.0036	-0.0564
YEN	108.62	0.0002	-0.0015	-0.0006	-0.0383
YUAN	7.0405	0.0012	0.0053	-0.0028	0.0139
SWISS FRANC	0.997	0.0042	0.0076	0.0066	0.0005
CANADIAN DOLLAR	1.33	0.0015	0.006	0.0178	0.005
MEXICAN PESO	19.3525	-0.0017	0.009	0.0128	-0.0513
INDIAN RUPEE	71.786	0.0006	0.002	0.0151	0.0161
BRAZILIAN REAL	4.1962	0.0008	0.0001	0.0403	0.0962
RUSSIAN RUBBLE	63.8736	0.0023	0.0014	-0.0003	-0.0348
DOLLAR INDEX	98.284	0.003	0.0029	0.0081	0.0139
KORREAN WON	1181.6	0.001	0.0143	0.0102	0.0434
SOUTH AFRICAN RAND	14.6255	-0.0036	-0.0051	-0.0009	0.0561
SINGAPORE DOLLAR	1.3642	0.001	0.0031	0.0016	-0.0079
HONGKONG DOLLAR	7.8252	0.0006	0	-0.002	0



FUNDAMENTAL OF COMMODITIES

MAJOR COMMODITIES

Commodity	S2	S1	Pivot	R1	R2
Crude oil	3854.7	4030.3	4148.7	4324.3	4442.7
Natural Gas	155.3	161.6	171.1	177.4	186.9

Commodity	S2	S1	Pivot	R1	R2
Copper	423.8	431.0	434.9	442.0	445.9
Zinc	178.0	180.6	183.1	185.6	188.1
Lead	150.3	151.4	152.7	153.7	155.0
Nickel	943.1	970.2	993.0	1020.1	1042.9

Commodity	S2	S1	Pivot	R1	R2
Gold	36133.0	36916.0	37883.0	38666.0	39633.0
Silver	42283.7	42914.3	44100.7	44731.3	45917.7

International Commodity	S2	S1	Pivot	R1	R2	CMP	PREV CLOSE
Gold COMEX	\$1,441.67	\$1,453.33	\$1,471.67	\$1,483.33	\$1,501.67	\$1,472.00	\$1,465.00
SILVER COMEX	16.03	16.31	16.87	17.15	17.71	16.95	16.6
NYMEX CRUDE	53.63	56.42	58.13	60.92	62.63	59.18	59.2
BRENT CRUDE	58.62	61.49	63.18	66.05	67.74	64.48	64.37

Updates:

- Oil hits three-month high as trade hopes, UK election lift sentiment: - Oil rose to its highest in nearly three months on Friday as progress in resolving the U.S.-China trade dispute and Britain's general election result appeared to lift two clouds that have been hanging over investor risk appetite.
- U.S. sources said on Thursday that Washington has set its terms for a trade deal with Beijing, offering to suspend some tariffs on goods and cut others in exchange for Chinese purchases of more American farm goods.
- Gold prices rise as weaker dollar and lingering doubts about China trade lift metal: - Gold prices climbed Friday as a weaker U.S. dollar and a lack of further rises in bond yields helped to produce some support for the precious metal.



MAJOR COMMODITIES

Commodity Major	Price	Day	Weekly	Monthly	Yearly
Crude Oil	57.9396	-0.0111	0	0.0352	0.1491
Brent	63.579	-0.0026	0.0028	0.0394	0.0813
Natural gas	2.6548	0.0284	-0.0092	0.1634	-0.3837
Gold	1462.75	-0.0011	-0.0027	-0.0195	0.1966
Silver	16.9754	-0.0081	0.0063	-0.033	0.1921
Platinum	891.09	-0.026	0.0019	-0.0261	0.0627
Palladium	1775.77	0.0087	0.0416	0.0197	0.5563
Copper	2.6368	0.007	0.0036	-0.0097	-0.0483
Lead	1952.5	0.0033	-0.0155	-0.1288	0.0167
Aluminum	1739	0.0029	-0.0011	0.0116	-0.1077
Tin	16350	-0.003	0.0093	-0.0297	-0.1303
Zinc	2305	0.0052	-0.038	-0.0632	-0.085



MCX GOLD CHART



Commodity	S2	S1	Pivot	R1	R2
Gold	37448.3	37870.7	38244.3	38666.7	39040.3

GOLD TECHNICAL INDICATOR	
RSI(14)	BUY
STOCH(9,6)	SELL
STOCHRSI(14)	SELL
MACD(12,26)	SELL
ADX(14)	BUY
Williams %R	NETURAL
CCI(14)	SELL
Highs/Lows(14)	BUY
Ultimate Oscillator	SELL
ROC	BUY
BUY	3
SELL	5
NEUTRAL	1
SUMMARY	MILD BEARISH

GOLD INTERNATIONAL CHART



Commodity	S2	S1	Pivot	R1	R2
Gold	\$1,466.3	\$1,485.7	\$1,503.3	\$1,522.7	\$1,540.3

GOLD INTERNATIONAL TECHNICAL INDICATOR	
RSI(14)	BUY
STOCH(9,6)	BUY
STOCHRSI(14)	BUY
MACD(12,26)	SELL
ADX(14)	BUY
Williams %R	NETURAL
CCI(14)	SELL
Highs/Lows(14)	BUY
Ultimate Oscillator	SELL
ROC	SELL
BUY	5
SELL	4
NEUTRAL	1
SUMMARY	MILD BULLISH



MCX SILVER CHART



Commodity	S2	S1	Pivot	R1	R2
Silver	42283.7	42914.3	44100.7	44731.3	45917.7

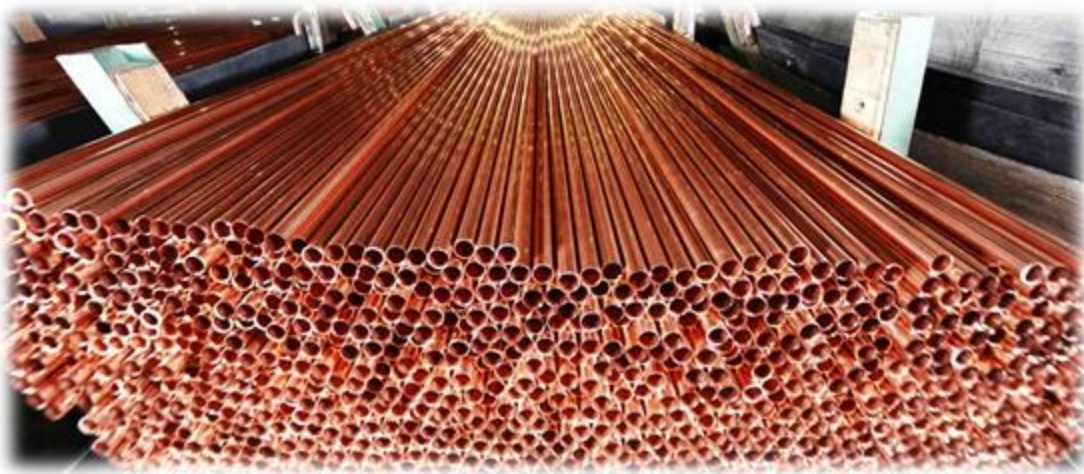
SILVER TECHNICAL INDICATOR	
RSI(14)	BUY
STOCH(9,6)	SELL
STOCHRSI(14)	BUY
MACD(12,26)	BUY
ADX(14)	SELL
Williams %R	NETURAL
CCI(14)	BUY
Highs/Lows(14)	BUY
Ultimate Oscillator	BUY
ROC	SELL
BUY	4
SELL	6
NEUTRAL	0
SUMMARY	MILD BEARISH

SILVER INTERNATIONAL CHART



Commodity	S2	S1	Pivot	R1	R2
Silver	\$16.0	\$16.3	\$16.9	\$17.2	\$17.7

SILVER INTERNATIONAL TECHNICAL INDICATOR	
RSI(14)	BUY
STOCH(9,6)	BUY
STOCHRSI(14)	BUY
MACD(12,26)	SELL
ADX(14)	BUY
Williams %R	SELL
CCI(14)	SELL
Highs/Lows(14)	BUY
Ultimate Oscillator	SELL
ROC	SELL
BUY	5
SELL	5
NEUTRAL	0
SUMMARY	MILD BULLISH



MCX COPPER CHART

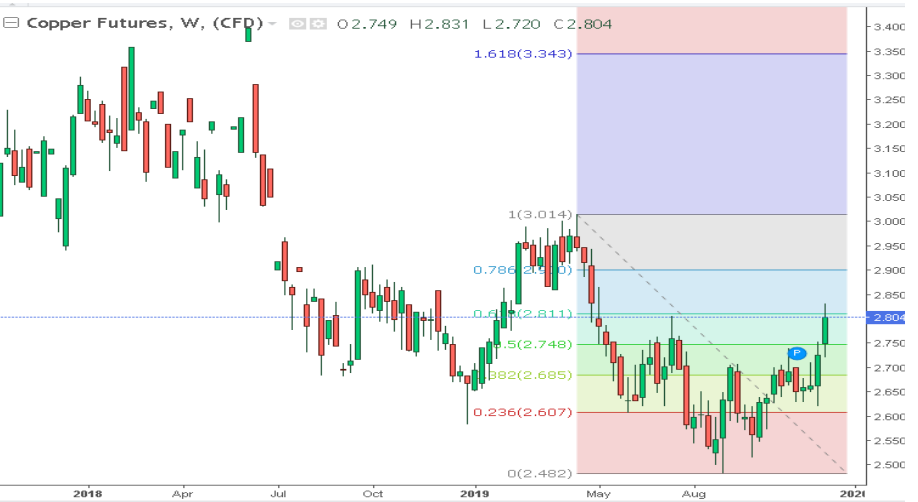


Commodity	S2	S1	Pivot	R1	R2
Copper	423.8	431.0	434.9	442.0	445.9

COPPER TECHNICAL INDICATOR

RSI(14)	BUY
STOCH(9,6)	BUY
STOCHRSI(14)	BUY
MACD(12,26)	SELL
ADX(14)	SELL
Williams %R	NETURAL
CCI(14)	BUY
Highs/Lows(14)	BUY
Ultimate Oscillator	BUY
ROC	SELL
BUY	6
SELL	3
NEUTRAL	1
SUMMARY	MILD BULLISH

COPPER INTERNATIONAL CHART



Commodity	S2	S1	Pivot	R1	R2
Copper	\$2.550	\$2.640	\$2.700	\$2.780	\$2.840

COPPER INTERNATIONAL TECHNICAL INDICATOR

RSI(14)	BUY
STOCH(9,6)	BUY
STOCHRSI(14)	BUY
MACD(12,26)	BUY
ADX(14)	SELL
Williams %R	BUY
CCI(14)	BUY
Highs/Lows(14)	BUY
Ultimate Oscillator	BUY
ROC	BUY
BUY	8
SELL	1
NEUTRAL	0
SUMMARY	STRONG BULLISH



MCX CRUDE CHART

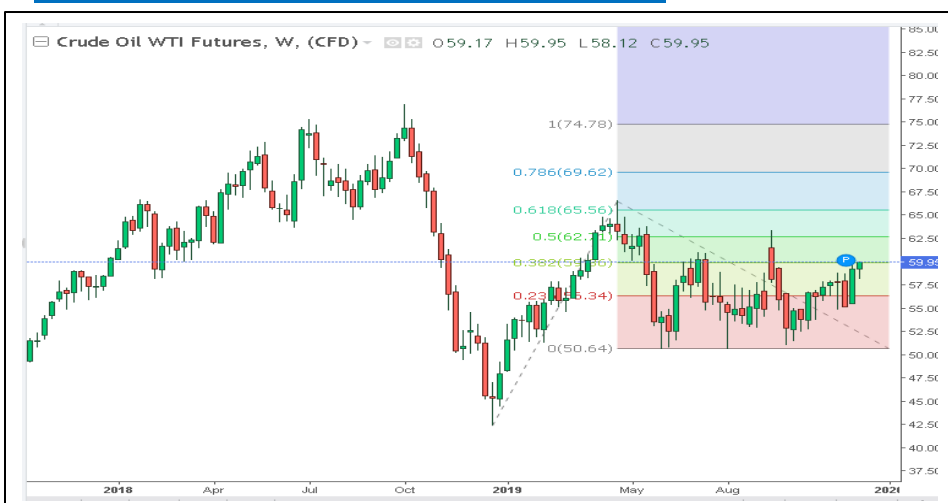


Commodity	S2	S1	Pivot	R1	R2
Crude oil	3854.7	4030.3	4148.7	4324.3	4442.7

CRUDEOIL TECHNICAL INDICATOR

RSI(14)	BUY
STOCH(9,6)	SELL
STOCHRSI(14)	SELL
MACD(12,26)	BUY
ADX(14)	SELL
Williams %R	NETURAL
CCI(14)	BUY
Highs/Lows(14)	BUY
Ultimate Oscillator	BUY
ROC	BUY
BUY	5
SELL	3
NEUTRAL	1
SUMMARY	NETURAL

NYMEX CRUDE CHART



Commodity	S2	S1	Pivot	R1	R2
Crude oil	\$53.6	\$56.4	\$58.1	\$60.9	\$62.6

CRUDE.OILNYM TECHNICAL INDICATOR

RSI(14)	BUY
STOCH(9,6)	SELL
STOCHRSI(14)	BUY
MACD(12,26)	BUY
ADX(14)	SELL
Williams %R	NETURAL
CCI(14)	BUY
Highs/Lows(14)	BUY
Ultimate Oscillator	BUY
ROC	BUY
BUY	6
SELL	2
NEUTRAL	1
SUMMARY	MILD BULLISH



MCX NATURAL GAS



Commodity	S2	S1	Pivot	R1	R2
Natural Gas	155.3	161.6	171.1	177.4	186.9

NATURALGAS TECHNICAL INDICATOR

RSI(14)	SELL
STOCH(9,6)	SELL
STOCHRSI(14)	SELL
MACD(12,26)	SELL
ADX(14)	SELL
Williams %R	SELL
CCI(14)	SELL
Highs/Lows(14)	BUY
Ultimate Oscillator	SELL
ROC	SELL
BUY	1
SELL	9
NEUTRAL	0
SUMMARY	STRONG BEARISH

NATURAL GAS INTERNATIONAL



Commodity	S2	S1	Pivot	R1	R2
Natural Gas	\$2.160	\$2.250	\$2.380	\$2.470	\$2.600

NATURAL GAS INTER. TECHNICAL INDICATOR

RSI(14)	SELL
STOCH(9,6)	SELL
STOCHRSI(14)	SELL
MACD(12,26)	SELL
ADX(14)	SELL
Williams %R	NETURAL
CCI(14)	SELL
Highs/Lows(14)	BUY
Ultimate Oscillator	SELL
ROC	SELL
BUY	1
SELL	8
NEUTRAL	1
SUMMARY	STRONG BEARISH

DATE	TIME	CURRENCY	ECONOMIC DATA	FORECAST	PREVIOUS
MonDec 16	7:30am	CNY	Fixed Asset Investment ytd/y	5.20%	5.20%
		CNY	Industrial Production y/y	5.10%	4.70%
	1:45pm	EUR	French Flash Services PMI	52.1	52.2
		EUR	French Flash Manufacturing PMI	51.5	51.7
	2:00pm	EUR	German Flash Manufacturing PMI	44.6	44.1
		EUR	German Flash Services PMI		51.7
	2:30pm	EUR	Flash Manufacturing PMI	47.3	46.9
		EUR	Flash Services PMI	52	51.9
	3:00pm	GBP	Flash Manufacturing PMI	49.1	48.9
		GBP	Flash Services PMI	49.6	49.3
	8:15pm	USD	Flash Manufacturing PMI	52.6	52.6
	9:30pm	GBP	Bank Stress Test Results		
		GBP	BOE Financial Stability Report		
TueDec 17	3:00pm	GBP	Average Earnings Index 3m/y	3.40%	3.60%
	7:00pm	USD	Building Permits	1.41M	1.46M
WedDec 18	2:00pm	EUR	ECB President Lagarde Speaks		
	2:30pm	EUR	German Ifo Business Climate	95.6	95
	3:00pm	GBP	CPI y/y	1.50%	1.50%
		GBP	PPI Input m/m	0.10%	-1.30%
	9:00pm	USD	Crude Oil Inventories		0.8M
ThuDec 19	Tentative	JPY	Monetary Policy Statement		
	Tentative	JPY	BOJ Press Conference		
	3:00pm	GBP	Retail Sales m/m	0.20%	-0.10%
	5:30pm	GBP	MPC Official Bank Rate Votes	0-2-7	0-2-7
		GBP	Monetary Policy Summary		
		GBP	Official Bank Rate	0.75%	0.75%
	7:00pm	USD	Philly Fed Manufacturing Index	8.1	10.4

[illegible]



204 Amardarshan Building 3rd floor Saket Nagar , Indore-452018

Call: 0731-4797170-171-172

To get regular updates please whatsapp us on Mob. +91 9300059777

DISCLAIMER

This report is for private circulation within the Indira Group. This report is strictly confidential and for information of the selected recipient only and may not be altered in any way, transmitted to, copied or distributed, in part or in whole, to any other person or to the media or reproduced in any form. This report should not be construed as an offer or solicitation to buy or sell any securities or any interest in securities. It does not constitute a personal recommendation or take into account the particular investment objectives, financial situations, or any such factor. The information, opinions, estimates and forecasts contained here have been obtained from, or are based upon, sources we believe to be reliable, but no representation of warranty, express or implied, is made by us to their accuracy or completeness. Opinions expressed are our current opinions as of the date appearing on this material only and are subject to change without notice.